



Fungicide

# THEIA®

f u n g i c i d e



## A Full-Spectrum Approach to Crop Protection

Theia® fungicide provides robust, broad-spectrum protection against a variety of foliar and soilborne diseases in strawberries and other crops. Through multiple modes of action, Theia fungicide blocks fungal, bacterial, and oomycete pathogens and activates crops' natural defenses.

### Active Ingredient

*Bacillus subtilis* strain AFS032321

### Formulation

Dry flowable

### Recommended Use Rate

1.5-3 lb/A

## Key Features and Benefits

- High fungicidal and bactericidal activity provides return on investment, fewer SKUs, and peace of mind
- Multiple modes of action for robust broad-spectrum control and low resistance risk
- 4-hour REI and 0-day PHI give harvest flexibility and worker protection
- U.S. residue tolerance exemption and no MRLs fit with food value chain and exports
- Robust formulation with excellent (2 year) shelf life and no special storage requirements
- Compatible with chemicals, adjuvants, and antibiotics for tank mix flexibility
- OMRI listed for use in organic in addition to conventional cropping systems

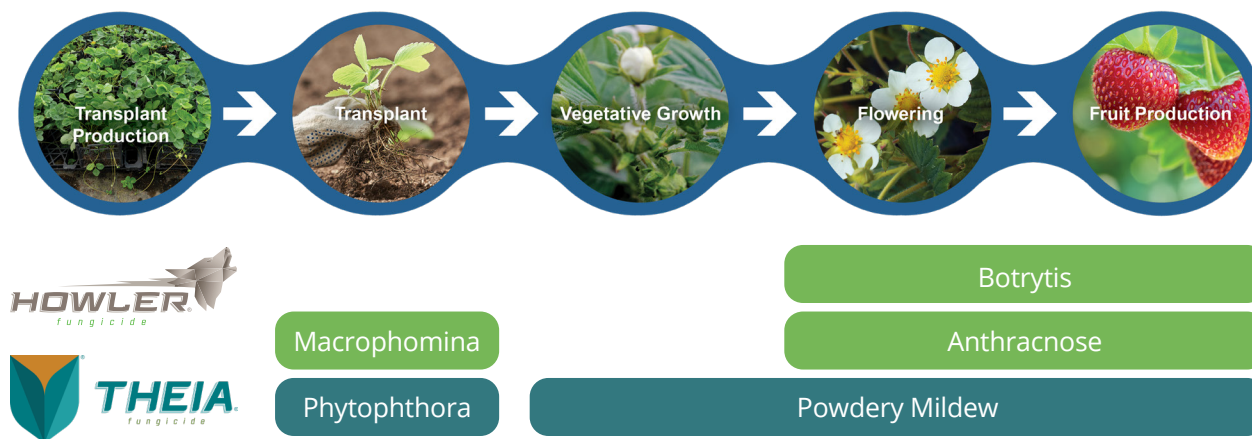
## Target Diseases for Treatment with Theia Fungicide

- Phytophthora Crown and Root Rot
- Powdery Mildew

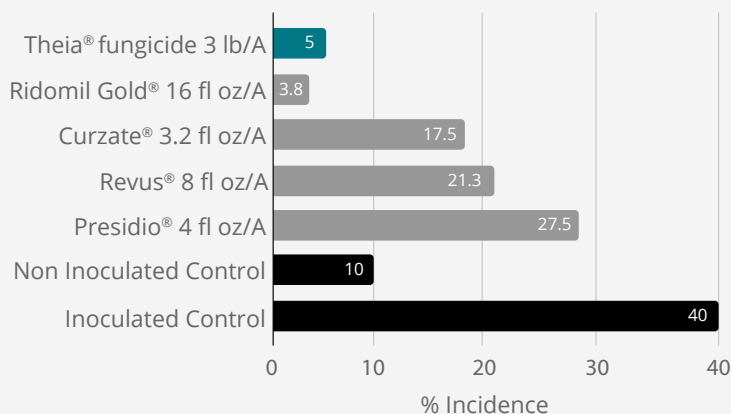


## Proof in the Performance

Recommended application timing for AgBiome solutions to prevent key diseases in strawberries. Apply Theia® fungicide at 3 lb/A in organic programs or 1.5 lb/A in a tank mix or conventional program.



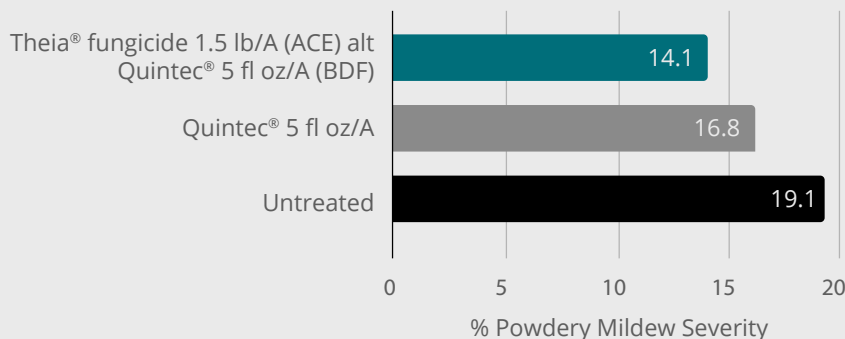
### Strawberry Phytophthora Control with Theia® Fungicide



Theia fungicide increased marketable yield by 1,697 lb/A over the untreated control and reduced Phytophthora crown rot incidence as well as or better than conventional fungicides.

Data courtesy of UFL GCREC, 2020-2021 AgBiome-sponsored trial. Wimauma, FL. "Sensation" strawberry transplanted 13-Oct-2020. Plants inoculated with *Phytophthora cactorum* on 21-Oct-2020. Fungicides applied by drip 15, 36, and 57-days after planting. Marketable yield = yields from 30-Nov-2020 to 7-Jan-2021 (11 harvests total). Phytophthora crown rot incidence = percentage of wilted, partially collapsed, and severely stunted plants.

### Strawberry Powdery Mildew Control with Theia® Fungicide



Theia fungicide alternated with Quintec provided better control of powdery mildew than Quintec alone. Theia fungicide can be used to slow resistance development in a fungicide program.

2022-2023 Dover, FL. AgBiome-sponsored trial. "Brilliance" strawberry transplanted 17-Oct-2022. Fungicides were foliarly applied 45, 52, 59, 66, 73, and 80 days after planting. Powdery mildew severity was rated on a 0-100% scale 82 days after planting, where all plants covered in lesions would be rated 100%. All treatments contained Induce® adjuvant at 0.125% v/v.